

SILVELOX
le porte per eccellenza

GARAGE

DOORS



In its 50 years of history Silvelox created a unique range of models able to satisfy different architectural and aesthetical solutions. Silvelox garage doors are characterised by a particular up-and-over mechanism which has been constantly improved and has become one of the most important factors of Silvelox production which distinguishes it from other brands. In producing its garage doors, Silvelox has always paid attention to security. Silvelox offers two different series for garage door on the basis of security class: Secur Plus, that owns a Class 3 anti-intrusion certification following the EN

1627 regulation and Secur, with Class 1 anti-intrusion certification. The series choice according to the security class does not influence on the aesthetical options that Silvelox proposes in the catalogue, with the addition of infinite customisation and drawings studied to satisfy the needs of specific customers, offering the chance to match garage door and entrance door.



GARAGE DOORS

PAG 42 FRAME



PAG 44 FLAT



PAG 46 LAYER



PAG 48 RANDOM



PAG 58 FOR



PAG 60 GEO



PAG 62 ZEN



PAG 64 OLD



PAG 74 EGO



PAG 76 TOP

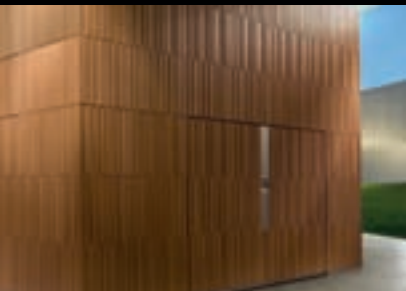


PAG 78 MET



Silvelox, ductile and sensitive to the request of the most exacting customer, offers the option to customise standard designs or produce bespoke design according to individual customer requirements.

PAG 50 MATRIX



PAG 52 SLOT



PAG 54 ARA



PAG 56 VIP



PAG 66 SPI



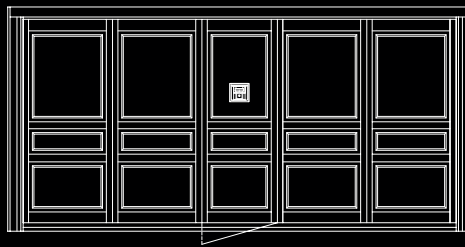
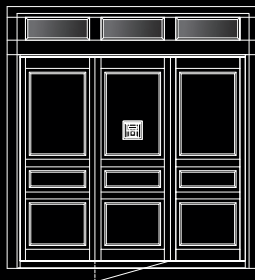
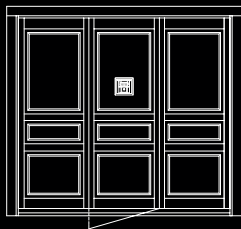
PAG 68 TAU



PAG 70 ARC



PAG 72 BIG







FRAME

MODEL CONTEMPORARY AND ELEGANT

Marked carving creates bas-relief solutions that transfer subjectivity and precision to the panel. The chance to insert a coplanar fascia to the handle will contribute to increase design and elegance.

wood:

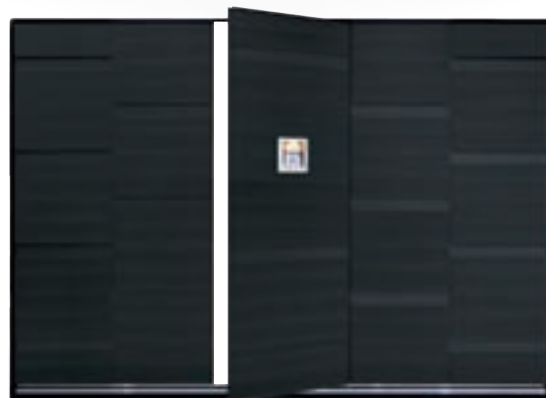
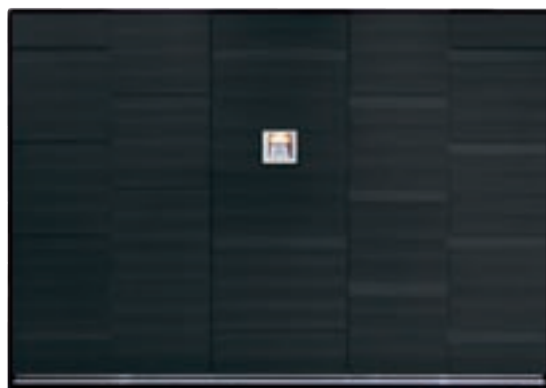
Brushed larch.

finish:

Black.

accessories:

**Platinsilver handle and
crossbar.**



FLAT

MODEL

AN EXPRESSION OF SIMPLICITY

Pure minimalism in a wood panel with horizontal or vertical grain enhanced by a Platinsilver fascia where the handle is installed.

wood:

Brushed larch

finish:

Sand.

accessories:

**Platinsilver handle,
crossbar and fascia (optional).**





LAYER

MODEL

ESSENTIAL LINES

Engraved carving that increase horizontally or vertically the wood's grain remarking the Platinsilver fascia that enhance the handle.

wood:

Brushed larch

finish:

Black.

accessories:

**Platinsilver handle,
crossbar and fascia (optional).**









RANDOM

MODEL

RESEARCHED REFINEMENT

Irregular carving for a researched effect both for style and design give to the door a distinctive personality that accompanies the perfection of the Platinsilver fascia, raising it to a structural element, sign of a modern, new and definite architecture.

wood:

Oak

finish:

Natural.

accessories:

Platinsilver handle, crossbar and fascia (optional).



MATRIX

MODEL

SOPHISTICATED ORIGINALITY

The planning inspiration is exalted by the particular drawing of great stage effect and sophisticated taste.

wood:

Oak

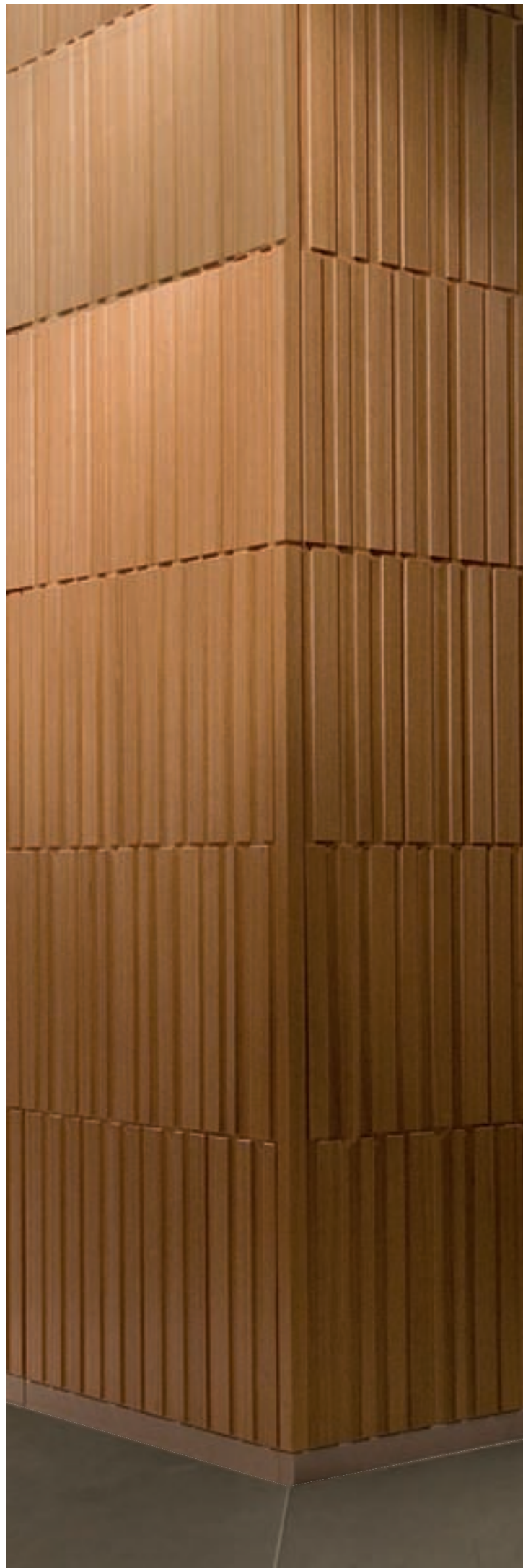
finish:

Natural.

accessories:

**Platinsilver handle,
crossbar and fascia (optional).**

Example with W concept









SLOT

MODEL INCISIVE STYLE

A distinguishing working that combines bas-reliefs that exalt the shapes of a fashionable garage door.

wood:
Okoumè.
finish:
Dove grey.
handle:
Platinbronze.







ARA

MODEL

DEFINITE LINES

Harmonious combination between geometrical shapes for a high design creation.

wood:
Okoumé.
finish:
Pure white RAL 9010.
accessories:
**Handle and matching
lower leaf crossbar
finished in Platinsilver.**



VIP

MODEL A CLASSIC

An everlasting classic where vertical section show sobriety and tradition.

This model is also available with 100 mm wide sections - Doc Model or with stainless- steel inserts.

wood:
Okoumè.
finish:
Walnut.
handle:
Platinbronze.







FOR

MODEL VERSATILITY

This model is characterized by essentiality and high-strictness of lines, thanks to the horizontal grooves with rounded edges.

This model is also available with stainless- steel inserts.

wood:

Okoumé.

finish:

Silk grey RAL 7044.

accessories:

**Insert in stainless-steel,
matching handle and
lower leaf crossbar
finished in Platinsilver.**



GEO

MODEL MODERNEFFECT

Crossings between vertical and horizontal grooves make this model a creation of avant-garde.

Also available with stainless- steel inserts.

wood:

Oak.

finish:

Natural.

accessories:

handle and matching

lower leaf crossbar

finished in Platinsilver.





ZEN

MODEL REFINED MINIMALISM

The tradition of a classic drawing with horizontal lines combines the modern insertion of a wider squared carving that inserts the door in a frame, to underline its importance.

wood:
Okoumé.
finish:
Light ivory RAL 1015.
handle:
Platinbronze.









OLD

MODEL

CLASSICAL DESIGN

This model draws inspiration from the classical garage door, with two or more leafs, that was produced by craftsman of the past. Its working with wide horizontal stave is a mark of an austere and ancient elegance.

wood:

Brushed larch.

finish:

Walnut.

accessories:

handle, lower leaf crossbar and matching letter box finished in Antique Bronze.



SPI

MODEL SYMMETRICAL DESIGN

Great tradition design, in a model with “fish bones” grooves and wide stave.

wood:
Northern spruce.
finish:
Honey.
handle:
Platinbronze.









TAU

MODEL ORIGINAL PERSONALITY

Elegant crossing of lines and bas-reliefs in a drawing rich of originality that gives personality to your home.

Tau model also available with a unique wood insert.

wood:
Teak.
finish:
Natural.
accessories:
Mahogany Meranti inserts.







ARC

MODEL ELEGANT EXPRESSION

Gentle curves and sweeping arches are enhanced, in this example, accessorised with Georgian bar windows.

wood:
Okoumé.
finish:
Mahogany.
accessories:
Georgian bar windows.



BIG

MODEL

GEORGIAN STYLE

With a classic elegance evocative of the graceful Georgian era, these doors will nevertheless look stunning in both traditional and modern setting.

wood:

Okoumè.

finish:

Fir green RAL 6009.

handle:

Platinbronze.





EGO

MODEL STAGE EFFECT

A bold, striking design that will work well with more formal, period properties.

wood:
Okoumé.
finish:
RAL 9005 Jet black .
accessories:
**handle and matching lower
leaf crossbar finished in
Antique Bronze.**





TOP

MODEL

CLASSICAL PRESTIGE

The formal matrix of tiles create a door of great prestige and character.

wood:

Oak.

finish:

Oak.

handle:

Platinbronze.







MET

MODEL

MATERIAL INNOVATION

Uncompromisingly contemporary and an ideal architectonic solution for ultra-modern applications, the MET series has stainless steel panels in a variety of colour ways and designs.

MET doors can be manufactured from a vast range of materials, both traditional and ultra-modern. Here we detail just a few:

- sheet of pre-varnished steel in colours pure white, grey brown, moss green and black, as shown in the Silvelox sample book;
- stainless steel sheet (satin, shiny);
- stainless steel rigid sheet, figured or electro-coloured;
- sheet of copper, brass, aluminium.

MET can be designed to incorporate windows.







INTERIOR DESIGN

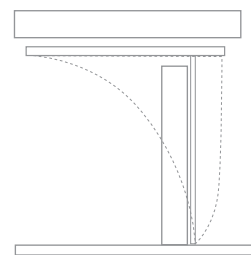
Great care is given to the details even in the interior design thanks to the absence of ceiling tracks and to the minimalism of the interior panel. The possible motorization is in the upper crossbar of the door's frame, guarantying functionality and lack of uncomfortable encumbrance.

The design of the garage door is synonymous with simplicity and style. The same care and attention that have gone into the exterior facade, all beautifully finished, has been given to the interior.

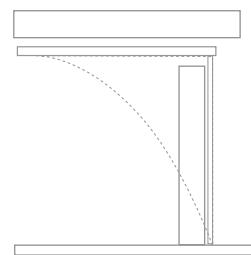


THE MECHANISM

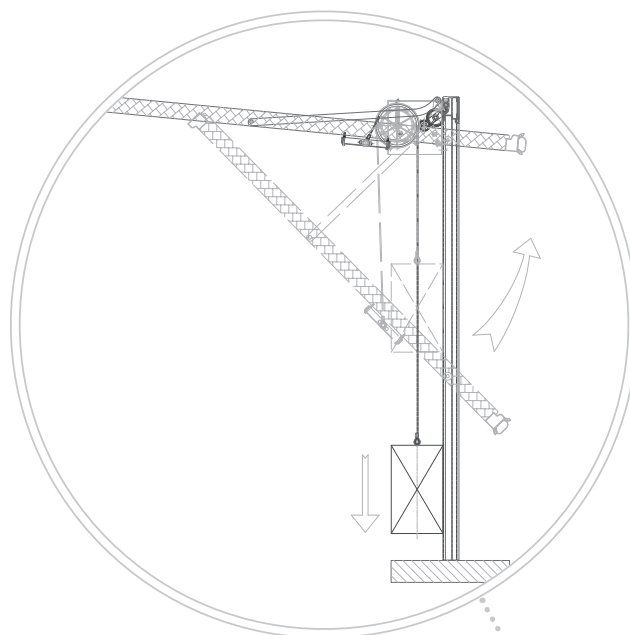
PRACTICALITY AND STRENGTH



Protruding leaf.



Non protruding leaf.



MINIMAL PROTRUSION

All Silvelox garage doors have minimal protrusion, this means that there is much less forward projection when you open them. It also means that a much greater percentage of the door, when up and open, is protected inside the garage, thus shielding it from the elements. A completely non-protruding mechanism is also available. With this, the door in its entirety slides effortlessly into the garage interior. Situations where no protrusion is important include locations where the garage faces directly onto a pavement, or in an arched opening where the geometry of the aperture would preclude any protrusion. Neither our protruding nor our non protruding mechanism require the use of unsightly ceiling tracks.

SELF-LIFTING

Silvelox' manually-operated doors open and close with little effort, on your part. This is achieved through a clever and patented counterbalance system that does the work for you. Just turn the handle and the door opens by itself.

LEAF THICKNESS

The leaf is 80 mm thick and is constructed from a number of panels. The assembly system is patented and ensures firm fastening of the panels to a metal frame.

MULTILAYER

The use of multilayer, marine-quality Okoume hardwood ensures great stability and high resistance even under the most challenging atmospheric conditions. The reliability of this technique is demonstrated by the fact that this same material is used extensively for nautical applications.

STANDARD INSULATION

Within the multilayer construction mentioned above is a honeycomb structure that provides great thermal and acoustic insulation.



METAL COMPONENTS

For security, robustness and long working life, all steel profiles and metal components are galvanised and coated with a thick layer of heat-applied varnish before being concealed under the external wood facings.

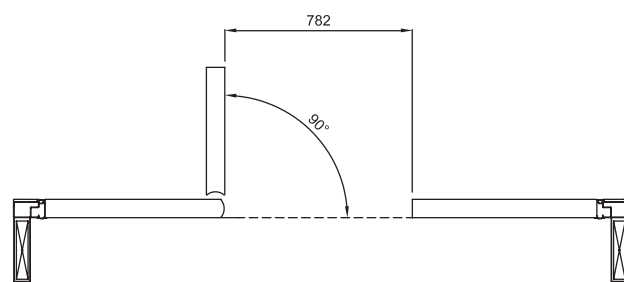
MOTORISATION-READY

Each door, even if ordered in the manual version, can be upgraded later through the addition of a Silvelox motorisation. At this stage you also have the option to link the doors to your security alarm system.

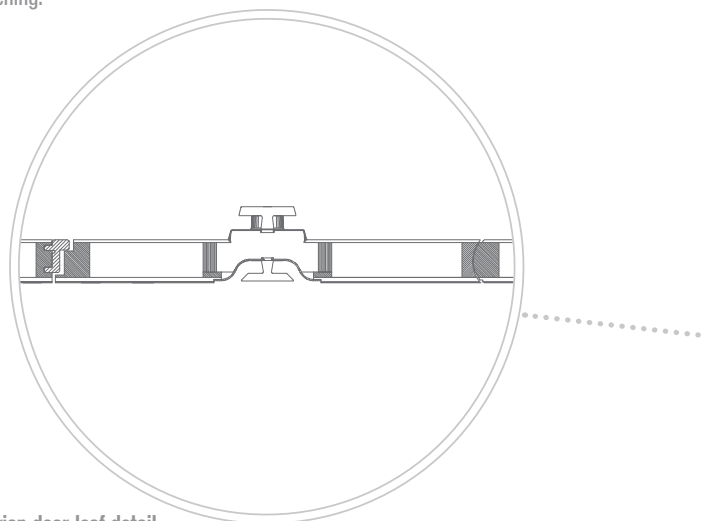


PEDE- STRIAN DOOR

ANOTHER ENTRANCE



90° opening.



Pedestrian door leaf detail.



1.



2.



3.

The pedestrian door offers quick and easy access to the garage without having to open the whole garage door. Hardly identifiable as a separate door, it is opened with an anticlockwise turn of the main garage door handle. For convenience, the internal handle has red and green indicators, so you can see at a glance whether or not the door is locked.

The use of 2 horizontal and 2 vertical bolts, that slide into position when the door closes, guarantees maximum security against intruders, while a perimeter seal on the four sides protects against the ingress of rain. A hidden hinge system enhances the clean lines of the door further and allows it to be opened to a full of 90° for ease of access. Furthermore, the height of the threshold has been reduced to the minimum that is technically possible.

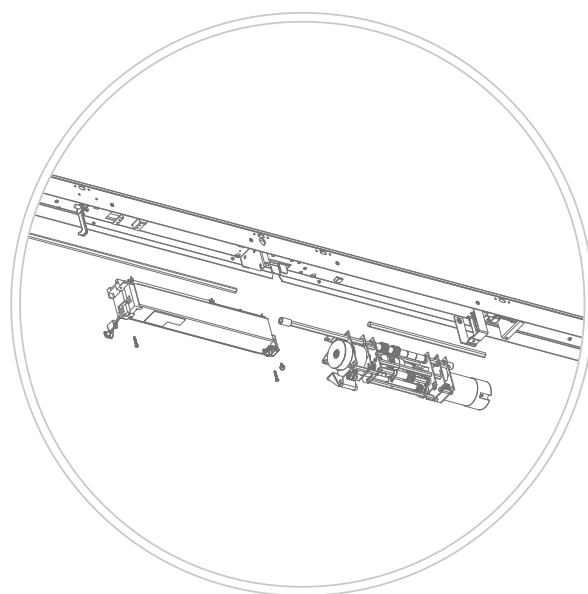
- 1 Hidden hinge.
- 2 Perimeter seal on the 4 sides.
- 3 Detail of vertical bolt.



MOTORI- SATIONS

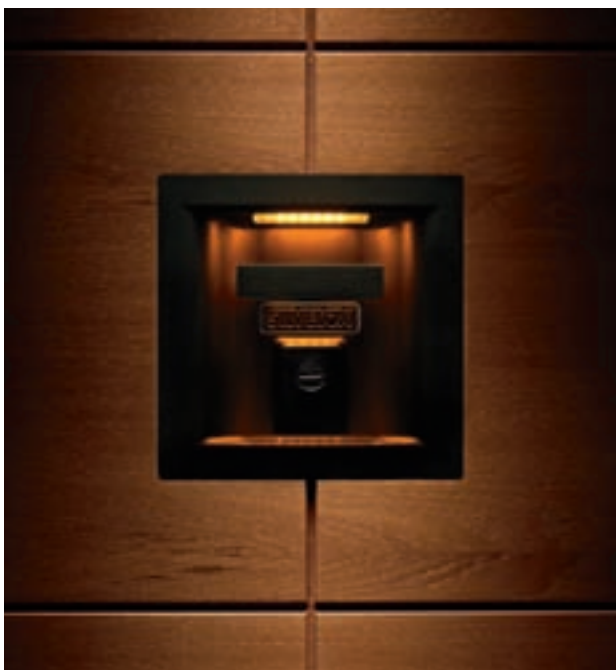
CLEVER FUNCTIONALITY

The exclusive motorisation is one of the distinctive elements of Silvelox' garage doors. Produced entirely by Silvelox, and protected by an international patent, the motors are a conjunction of functionality and aesthetics. It's completely hidden since the motor drive is concealed in the upper cross-section of the door's perimeter frame. It does not require unsightly ceiling tracks and does not impede the passage in any way. Using auto-diagnostic electronics to detect a malfunction, the system indicates which components require attention by showing a different number of flashes on an L.E.D. display, that is perfectly inserted in the handle design.



Detail of motorisation and local plant
in the upper cross-section.





COMBIMATIC

Original electromechanical motorisation, patented by Silvelox, regulates the velocity of the opening and closing phases to give a steady, controlled speed.

BLOCKMATIC

For extra protection, Blockmatic automatically slides two extra security bolts into position at the touch of a switch, and removes them when you wish to operate the door again. Optional.

SECURMATIC

The motor has been specially developed for the Secur Plus range of garage doors. Not only does it regulate the speed of the opening/closing phases, it also controls mobile bolts that lock the door to the frame at six key security points.

REMOTE CONTROLS WITH ROLLING CODE

Two or four channel remote controls are available, both with rolling code ID protection. Rolling code is the very latest generation of cloning and hacker-proof technology that can be incorporated into a remote control. All Silvelox remote controls are compatible with Homelink systems.



ACCES- SORIES

SPECIAL CARE

Silvelox garage door are available with different types of accessories, according to the plan needs and to the environment where they will be inserted.

WINDOWS

In order to lighten or to ventilate the garage room it's possible to have fixed windows or windows with folding opening, with different methacrylate or shatter-proof glass finishing. Inserted with elegance in the door's design, they enhance its aesthetic and personality.

VENTILATION GRILLS

Upon request, it is possible to insert "shutter" grilles that blend with the door design.

KEY WITH PERSONALISED CODE

Each garage door is supplied with three coded keys for the operation of the opening locking cylinder, which has anti-unthreading protection.

ROTATION OF COUNTERWEIGHT SECTION

In order to ease the diagonal entrance of the car in the garage space, Silvelox planned a 90° rotation and the adjacency to the frame of one or both sides of the garage door counterweights.



LETTER BOX

If the garage door is used also as entrance door we can design in a letter box with an external flap in the same finish as the door handle.

TRANSOM

In case of tall garages, Silvelox can supply overhead transoms that match to the design, the wood and the colour of the garage door.

GLAZED TRANSOM

To give more light to the garage, Silvelox can fit the transom with fixed or tilting windows.

PET FLAP

Another functionality of Silvelox door is the pet's flap. It's available with different measures according to the customer needs and there's also a model that can be opened just with a magnetic collar, supplied by us.





SECU- RITY

SERIES SECURPLUS CLASSE 3 CERTIFICATION BURGLAR RESISTANT

The Silvelox Secur Plus range is certified Class 3 burglar resistance to EN 1627 and while offering an exceptional degree of burglar resistance, it is virtually indistinguishable on the outside from our standard range. As a result, you will not be advertising the fact that there may be valuable assets within the garage or building.

However, there is a thick steel plate laminated into the body of the door that is virtually impervious to even a sustained attack, and the frame has been strengthened to comply with EN 1627. Nevertheless, the door feels as light and easy to use as our standard ranges, and opens fully at the turn of the handle.

- 80 mm thick leaf invisibly laminated with an integrated steel sheet backed by reinforced steel rods.
- Hardened steel hinges .
- Mobile bolts have drill-resistant and anti-unthreading cylinders, invisibly protected by a manganese steel plate to protect against jemmying.
- Crossbar and uprights are reinforced with steel brackets in areas that are susceptible to break in.
- To anchor the frame to the concrete wall (or to similar structures, of mechanical resistance equal or superior to R 250 Kg/sqcm) special fixing systems are used rather than normal brackets.

- 1 Fixing system.
2 Mobile bolts.
3 Roller lug
anti-unthreading plate .

1



2



3

www.silverlox.com